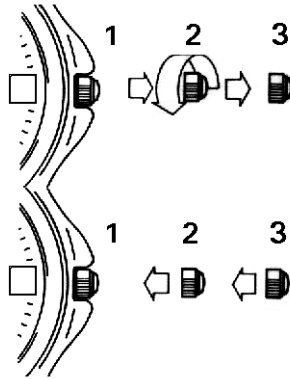




www.zeno-watch.ch

Independent Watchmanufacturing Since 1922

Setting the time and adjusting the date



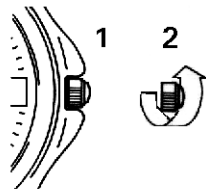
- 1 **neutral position**
 Quartz = silent position, no function
 Mechanical = winding position
- 2 **date-adjustment position**
 - forward quick date-adjustment
 - backward quick day-adjustment
- 3 **handsetting and second stop position**
 Adjust hour and minute by turning the crown

Warning: Correction cannot be effected between 20h and 2h

Note: While turning the hands, please observe that date will change at 12pm (midnight).



Lastly push back the crown in position 1!



- 1 **neutral position**
 Quartz = silent position, no function
 Mechanical = winding position
- 2 **Moonphases**
 Turn the crown backward.
 In order to get an accurate adjustment set the moonphase indicator to full moon position; any further jump equals one day.

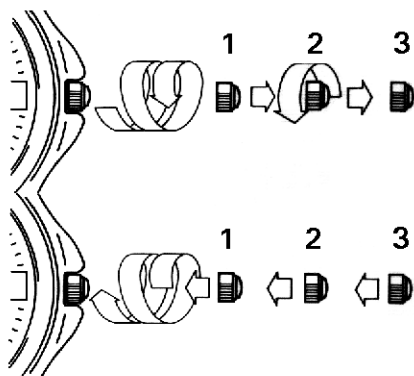
Warning: No correction between 20h and 2h

Adjusting the moonphase

Moonphase	2001	2002	2003	2004	2005
JAN.	09	28	18	07	25
FEB.	08	27	16	06	24
MAR.	09	28	18	06	25
APR.	08	27	16	05	24
MAY	07	26	16	04	23
JUNE	06	24	14	03	22

Moonphase	2001	2002	2003	2004	2005
JULY	05	24	13	2/31	21
AUG.	04	22	12	30	19
SEPT.	02	21	10	28	18
OCT.	02	21	10	28	17
NOV.	01/30	20	09	26	16
DEC.	30	19	08	26	15

Srew on crown



- 1 **neutral position (unscrew crown first)**
 Quartz = silent position, no function
 Mechanical = winding position
- 2 **date-adjustment position**
 - forward quick date-adjustment
 - backward quick day-adjustment
- 3 **handsetting and second stop position**
 Adjust hour and minute by turning the crown

Warning: Correction cannot be effected between 20h and 2h

Note: While turning the hands please observe that date will change at 12pm (midnight).



Lastly, push back the crown all the way, then press it against the case and srew it on at the same time.
The watch has to be worn only with screwed on crown!